



Galliford Try – Exceptional Lift Procedure



Agenda



- Why was the Exceptional Lift procedure developed?
- What is the Exceptional Lift Procedure?
- Implementation
- Impact
- Summary
- Q&A

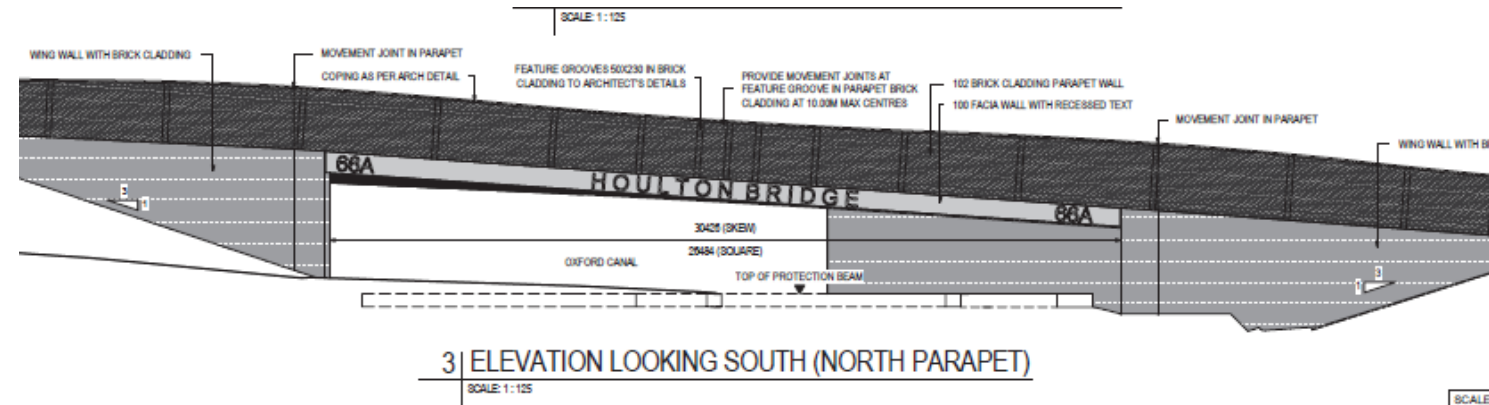


What is it?

Why....



- No specific guidance on safe installation of bridge beams
- Risk of crushing injuries
- Risk of entrapment
- Risks are enhanced owing to multiple interfaces
- Hazards from situations of temporary instability
- Hazards of lifting large objects
- Hundreds of bridges built each year



What is it?



- Formalised procedure
- Early stage collaboration
- Sign off by four distinct parties before lift proceeds
- Considering temporary instability
- Management through a Design Responsibility Matrix and a Methodology Review Matrix



What is it?



Design Responsibility Matrix covering, inter alia:

- Stability when offloading
- Stability when being landed and until deck cast
- Cantilever falsework design
- Permanent formwork, if any
- Crane foundations

Many designers and interfaces

Methodology Review Matrix covering, inter alia:

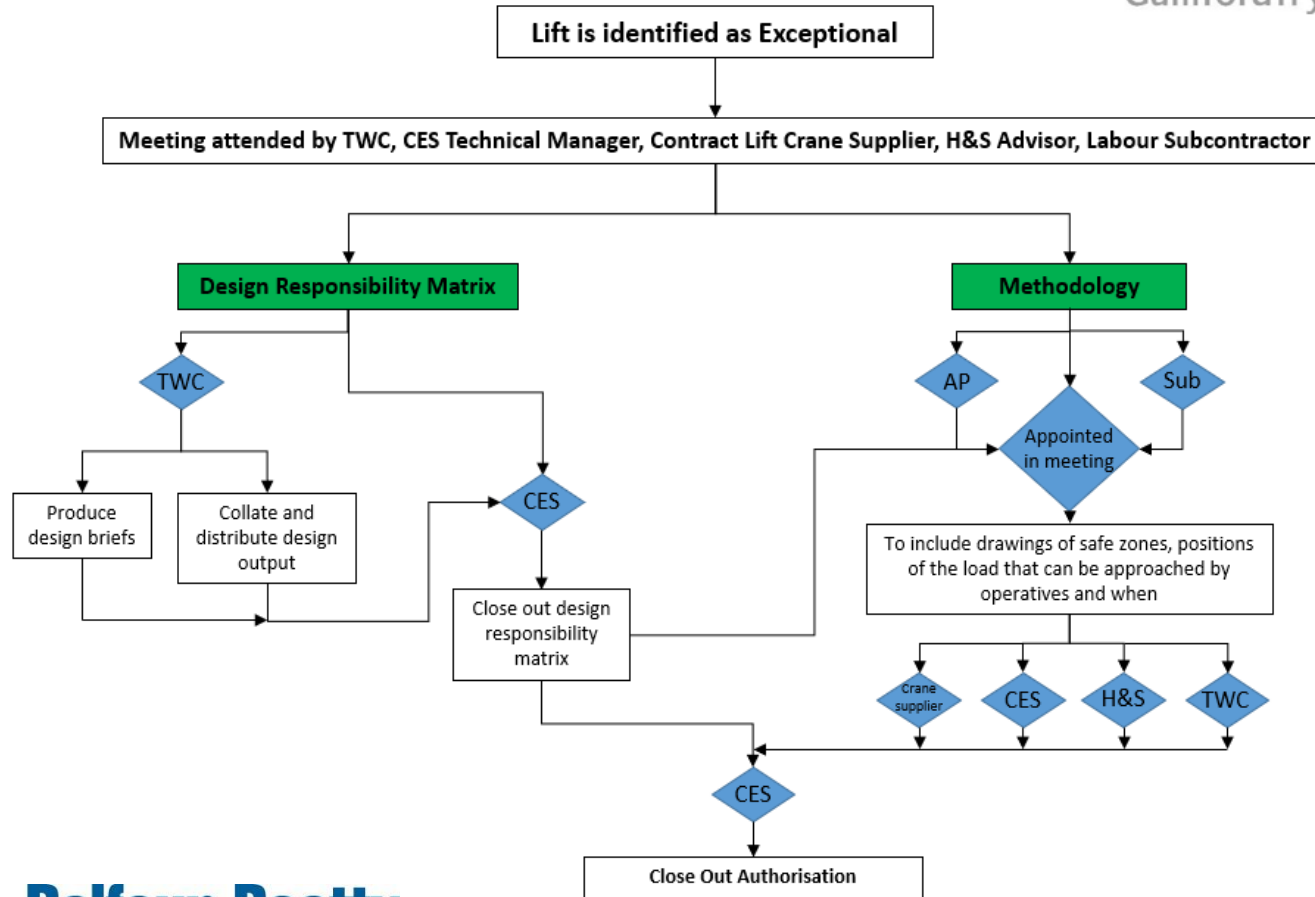
- Location of personnel
- Exclusion zones
- Access
- Layout and Geometry
- Craneage use
- Coordination between multiple subcontractors

What is it?



The Solution

GallifordTry



- Lift reviewed during pre-construction phase
- Lifts assigned as 'normal', or 'exceptional'
- Triggers process with team
- Highlighted to SLT
- Aim is to eliminate physical interaction with the lift



Rugby Radio Link Road

- An Exceptional Lift Procedure was followed on the project
- Meetings commenced 5 months prior to lift
- DRM and MRM used to manage the procedure
- Sign off from GTE, TWC, Health & Safety and Director
- Methodology considered and discussed, approved and signed off
- Installation of temporary stability frames
- Discussion with PWD to resolve reinforcement clashes
- Discussion with PD





Grantham Southern Relief Rd Phase 2

- An Exceptional Lift Procedure was followed on the project
- Collaboration started during 2017, built during 2020
- Sign off from GTE, TWC, Health & Safety and Director
- Methodology considered and discussed, approved and signed off
- Installation of temporary stability frames
- Central point of build reviewed and amended
- Working window reviewed and amended



Impact

- All lifts undertaken since implementation incident free
- No unplanned change implemented
- Each lift delivered ahead of programme
- Allowed flexibility but without compromise



Summary



- Not about over complex processes and procedures
- Focuses on communication and planning
- Assigns owners within the procedure and key milestones
- Built on 'Go/No Go'
- Focus is always on removing interaction from lift
- Recognised by BCIA, CCS, CN
- Company wide – adds value





Thank you for listening