

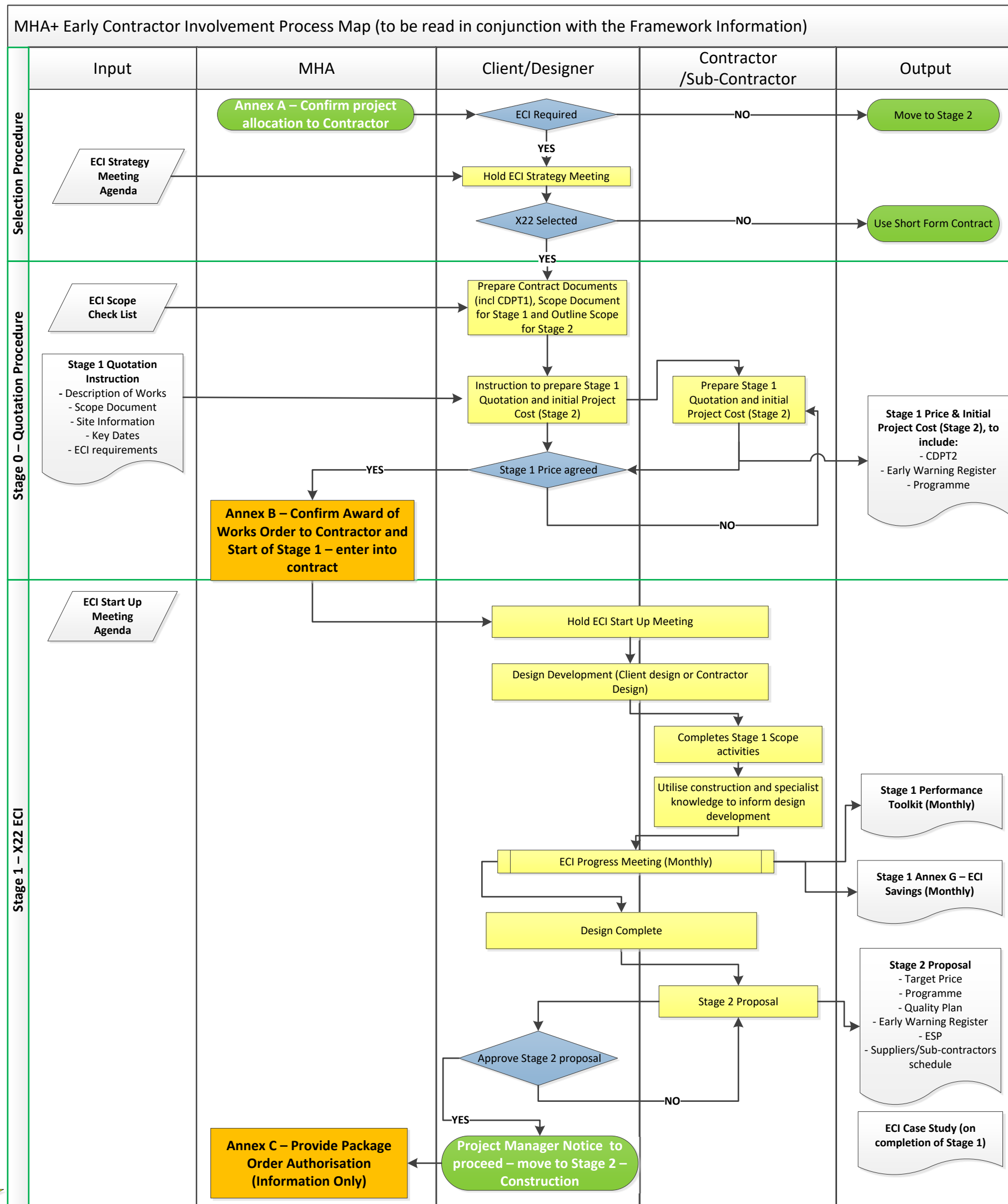
Stages align with the Chartered Institute of Building – Code of Practice for Project Management

INCEPTION

FEASIBILITY/STRATEGY

PRE-CONSTRUCTION

CONSTRUCTION



Guidance Notes

- A key objective of ECI is instil collaborative team working ethos and approach between Client, Designer, Contractor and supply chain
- MSF3 provides Clients with access to the Secondary Option Clause X22 which introduces a contract and payment mechanism for Early Contractor Involvement (ECI) which has proven to deliver overall project benefits during MSF3
- The Client and Contractor will agree the extent of ECI to be completed under the contract, referred to in X22 as Stage 1 before moving to construction in Stage 2 following agreement of the target price. Project Forecasts, Programmes and Early Warning Registers are updated throughout Stage One and Stage Two
- ECI will benefit from a single Common Data Environment for the exchange and control of project information
- The benefits of ECI may be increased by the introduction of the Contractor to the project team at an earlier stage, in "Very Early ECI"
- Clients may consider using the Short Contract option within MSF3 to provide for Very Early ECI as a stand alone contract
- Clients could choose to place a Purchase Order for Very Early ECI, outside of the provisions of MSF3
- MSF3 FWCB has developed an agenda for a *ECI Strategy Meeting* for clients to engage with the appointed Contractor at a very early stage
- Effective budget/programme control of the project will require the project scope to be well defined at each stage of the project the FWCB has provided a useful *Scope Checklist*
- MHA offers ECI training to member authorities at all stages of project development, commissioning and delivery. This training is delivered with the assistance of ICE training
- NEC User guides are available to help develop the contract strategy and the preparation of the Contract Documents
- Further support and advice is also available from the Framework Manager