



# ROUTE REPORTS

MHA+ Overview

[Contact@RouteReports.com](mailto:Contact@RouteReports.com)

[RouteReports.com](http://RouteReports.com)

London | San Francisco



# What does the Route Reports platform do?

- **Automated highways safety inspections**
  - Collect inspector level defect data without stopping the vehicle
- **PAS 2161 certified surveys**
  - With detailed condition defect data
- **Works management system integrations**
  - One click job creation
  - Resolve customer enquiries faster with live imagery
  - Easier identification of failed repairs with historical imagery



# About Route Reports

Route Reports is based in London, and specialises in bringing the latest technologies to infrastructure operators to gain significant savings and efficiencies.

Route Reports monitors over 22,000 miles of road and 20,000 miles of rail across the UK, Channel Islands, and the USA.

Route Reports has extensive experience in helping our customers adopt technology to simplify manual processes.

## Road intelligence for:



## Rail intelligence for:





# Devices

**Can be installed** on any road vehicle

**100+ data points** per second

**Fully automated:** No driver input

**Automated** GDPR Blurring

**Installed** in under 15 minutes

**Real-time** computer vision



High accuracy GPS  
with route knowledge



4K Windscreen  
Camera



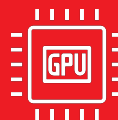
High-speed 4G  
connection



Accelerometer  
& Gyroscope



Analysis of up to  
32 road asset and  
defect types



Includes 256-core  
GPU for video  
analysis



Automatic  
Startup



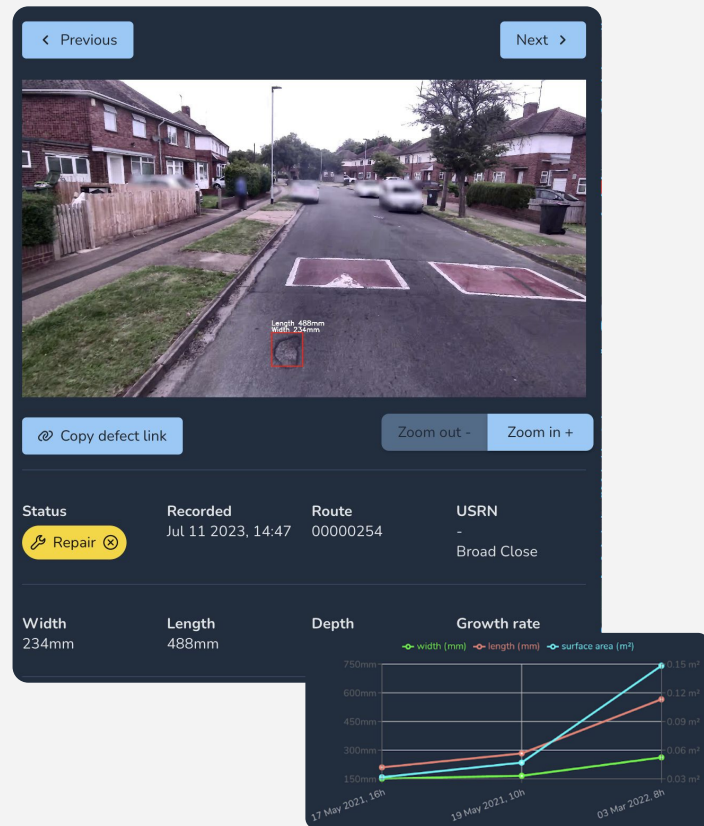
Storage for areas  
with no 4G



# Automated Detections

## Defects

- Speed up your safety inspections by getting automated measurements of defects across your network at up to 70mph
- Adapts to your existing defect matrix and risk based approach
- Minimum size thresholds can be set to ensure that only important defects are seen or sent to be fixed
- Analyse defect difference over time, with growth metrics

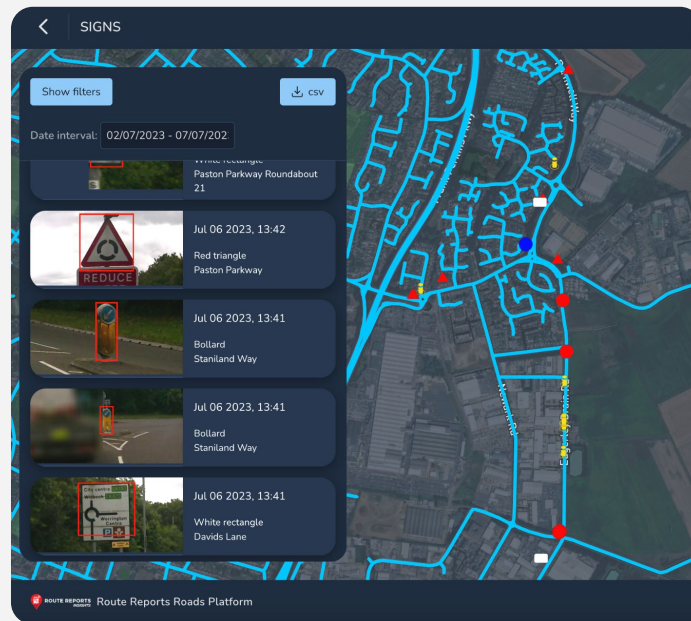




# Automated Detections

## Signs & Street Furniture

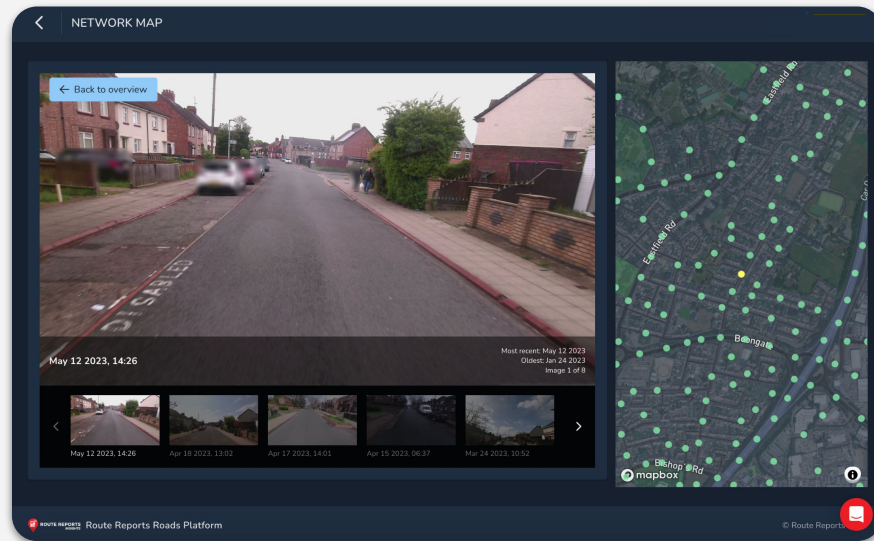
- Identify signage and street furniture defects automatically
- Find safety critical defects such as graffiti, foliage overgrowth and missing signs
- The system generates a full inventory of the signage on your network, as well as alerts for defective signage





# Route View

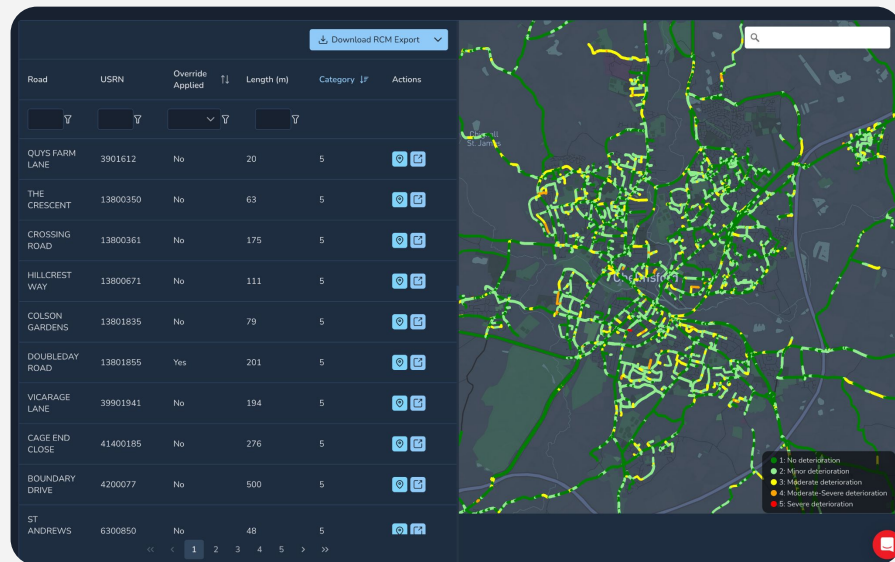
- Rapidly deal with resident enquiries without sending a vehicle to site
- 120° Imagery collected every 10 meters
- Historical imagery for anywhere your vehicles travel on your network, stored indefinitely
- Jump between dates to see changes in the network, such as contractor works





# PAS 2161 and RCM

- DfT standard scoring roads from 1-5 for 10m sections
- Route Reports collects detailed road condition data past the standard which can be used for longer term asset planning
- Data output will be linked to WMS Platforms with periodic updates



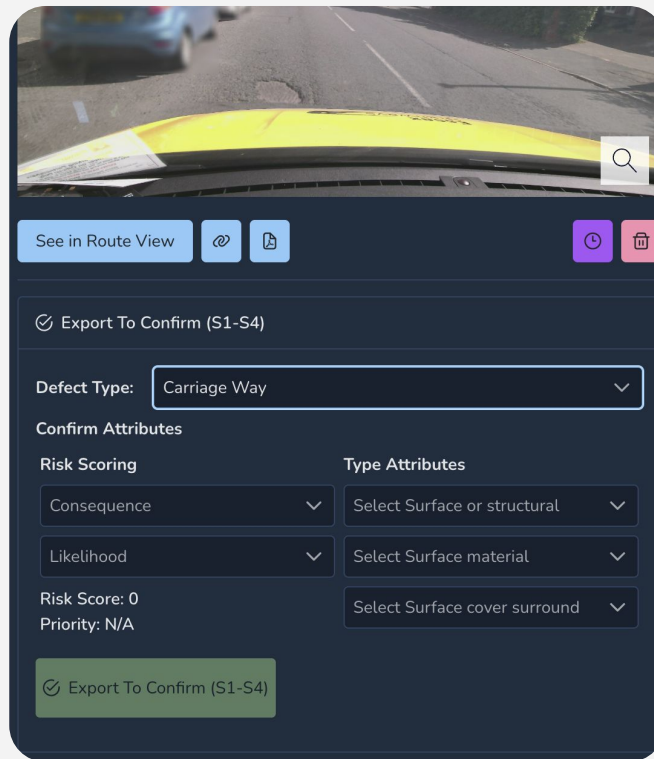
Preview	Type	Recorded	Actions	RC ID/Sample ID/Geom
	Alligator Cracking	Apr 24 2025, 10:10	<a href="#">Go To Section</a>	275623793 54651013 -2.9820845, 53.39191
	Longitudinal Cracking	Apr 24 2025, 10:09	<a href="#">Go To Section</a>	275618892 54009944 -2.9798267, 53.386795



# How Route Reports works with WMS Platforms

## Defect Exporting

- Live export to WMS platforms from Route Reports
- WMS platform Attributes synced
- Automated Risk Scoring and Priority determination
- Exports to WMS platform in seconds
- Enables significant time savings compared to inspectors using tablets at the side of the road

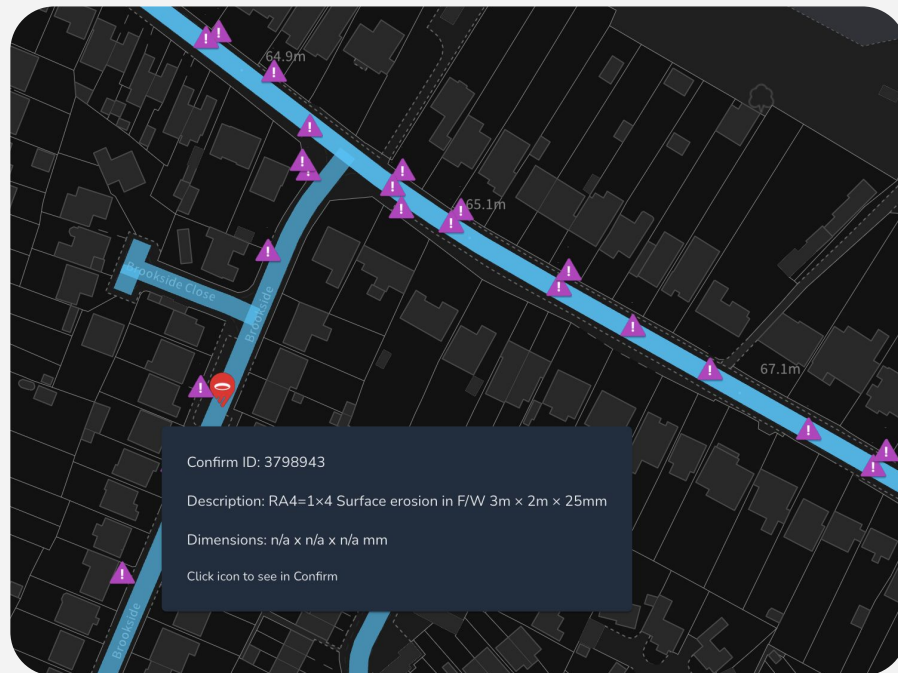




# How Route Reports works with WMS Platforms

## Historical Data Syncing

- Existing Jobs overlaid on the map
- Prevents duplicate jobs and aids in choosing a repair type (eg. short vs long term patch)

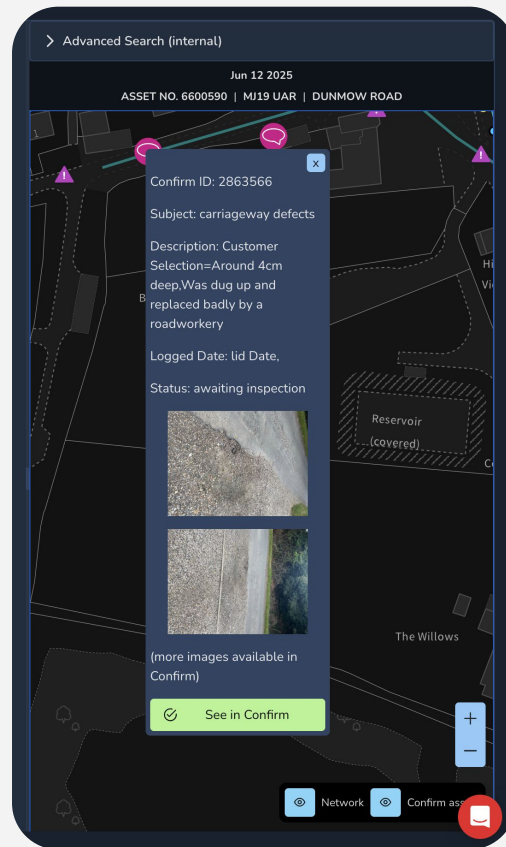




# How Route Reports works with WMS Platforms

## Enquiry Resolution

- Resident enquiries imported from WMS Platform
- Can be compared with Route View imagery and enquiries can be updated through Route Reports
- Helping reduce the enquiry backlog faced by Local Authorities


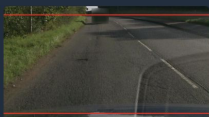
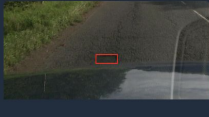

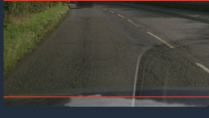
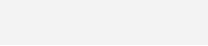




# Road Condition

## Condition Defect Capability:

- Alligator Cracking
- Bleeding
- Block Cracking
- Depression
- Longitudinal Cracking
- Potholes
- Raveling
- Previous Repairs
- Rutting
- Sealed Crack/Joint
- Shoving
- Transverse Cracking
- Delamination

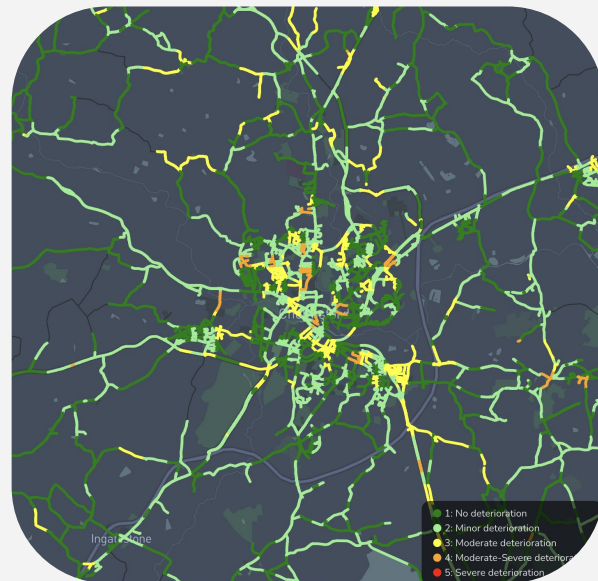
Preview	Type ↑↓	Recorded ↑↓	RC ID/Sample ID/Geom
	<input type="text" value="Select One"/>		
	Longitudinal Cracking	Oct 10 2024, 11:17	128296094 5764001 -0.904681, 52.2817001
	Alligator Cracking	Oct 10 2024, 11:16	128297286 5762980 -0.9196089, 52.2804909
	Pothole	Oct 10 2024, 11:16	128297287 5762542 -0.919541, 52.280455
	Pothole	Oct 10 2024, 11:16	128297287 5762543 -0.919563, 52.280455
	Alligator Cracking	Oct 10 2024, 11:16	128297290 5762977 -0.9191314, 52.2804871



# Future Developments

## Predictive Road Condition Monitoring

- In addition to the PAS 2161 functionality, Route Reports is using the benefit of daily coverage to develop monthly deterioration reports on the condition of the network
- Detailed parameters such as PCI delta, defect growth and resurfacing modelling will be available





# Future Developments

## Enforcement Activity

- Using permit locations, Route Reports is adding the ability to automatically check if items on the highway have a valid permit
- Examples include:
  - Streetworks/Traffic Management
  - Skips
  - Scaffolding

