



# Driving Excellence

Collaboration, Innovations  
and Impact

Empowering Local Authorities and Industry  
Partners to Build Better, Together.



# Navigating Tomorrow's Highways, Together.

**In today's challenging environment of financial constraints and shifting priorities, Midlands Highway Alliance Plus (MHA+) stands as a vital partner for England's highway authorities.**

We provide seamless access to our essential, compliant and procurement-friendly frameworks for medium schemes and professional services. We empower our members to navigate critical issues like climate change, social value and digital transformation through collaborative best practice with our sector-leading service improvement groups.

"Join our lively community and amplify your voice to influence the sector. With over a quarter of England's highway authorities as

members, MHA+ offers unparalleled opportunities for collaboration and growth. We look forward to working with you to shape the future of local highways.



**Ann Carruthers,**  
Chair of MHA+ Executive Board.



*Join our lively community and amplify your voice to influence the sector.*

# MHA+: The Alliance for forward-thinking Highway Authorities.

**MHA+ is a powerful Alliance of over 35 local highway authorities, united to deliver innovative and sustainable highway solutions.**

Our expansive network spans from Lancashire to Oxfordshire, Herefordshire to Lincolnshire. We bring together wide-ranging expertise and knowledge to deliver effective, innovative, and sustainable highway services across England. Our core aims are to:

## Accelerate Best Practice

Develop and share cutting-edge best practice in highway service delivery and design.

## Simplify Procurement Processes

Provide efficient and compliant 'routes to market' with our framework suppliers that champion quality, innovation and value for money.

## Amplify Your Influence

Engage directly, participate and lobby to shape the national agenda for local highways.



# Unlock Your Potential: Benefits of MHA+ Membership.

**Gain a competitive edge, drive innovation,  
and achieve your strategic objectives.**



## **Collaborate & Connect**

Engage in vibrant industry workstreams and discussion groups, connecting with like-minded experts and peers who are passionate about highways and transportation, civil engineering and construction.

## **Network with Peers**

Gain valuable insights and actionable recommendations to enhance your authority's service delivery.



## **Trusted Frameworks**

Access quality, compliant and pre-vetted resources from industry experts for the design and delivery of works, services, learning and development training through our well-established framework contracts.



## **Drive Service Improvement & Innovation**

Tap into an wealth of expertise, advice, shared ideas and sharing ideas, innovations and efficient practices.



### Inform Your Decisions

Gain crucial insights and guidance related to Government and other funding initiatives.



### Shape the Future

Actively participate in special projects, such as our pioneering on a range of themes and initiatives within the industry.



### Measure & Excel

Contribute to the 'bigger picture' by engaging in benchmarking and public satisfaction analysis through the NHT and CQC Efficiency Networks.



### Benefit from membership of Thematic Groups

Access dedicated support and resources through our established thematic groups focused on key themes such as social value, carbon reduction and digital futures.



### Amplify Your Voice

Become part of a large, influential alliance, providing collective power to shape key priority issues for the industry, national policies and funding initiatives.



### Shape service improvement

Join our Service Improvement and Thematic Groups. Share best practice with fellow local authorities.



### Celebrate excellence

Attend the MHA+ annual event, which is our flagship gathering for highway professionals – prestigious annual awards are voted by your peers.

#### Working in partnership with:

**ADEPT**  
Association of Directors of  
Environment, Economy, Planning & Transport



**ceca**

**CIHT**

**ICE**  
Institution of Civil Engineers

**IHE** INSTITUTE OF  
HIGHWAY  
ENGINEERS

**NHT**  
National Highways  
& Transport Network



**UK** ROADS  
LEADERSHIP  
GROUP

# Our Service Improvement Groups (SIGs) and Thematic Groups: Powering Progress Through Collective Intelligence

**Our 16 Service Improvement Groups (SIGs) and 3 Thematic Groups drive innovation and improvement through unparalleled partner collaboration. With over 700 members, our groups facilitate a constant flow of knowledge sharing, best practice identification, and practical problem-solving.**

Join these vibrant communities and access a wealth of experience and resources, gaining valuable insights from national bodies and leading subject matter experts from the industry, supply chain and academia.

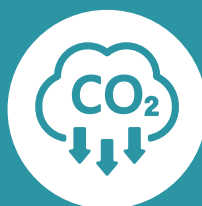
Online discussion boards for each group area available through a dedicated member-only website which includes the efficiencies and benefits log reported by SIG members since 2010.

“

*Being able to discuss shared issues and opportunities among local authority peers – and work through them for the benefit of all – a key membership bonus.*

”

## Our Thematic Groups



Resilience, Efficiency & Carbon

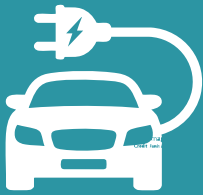


Social Value



Digital

**Low Carbon  
Transport and  
Travel**



**Casualty  
Reduction**



**Civil Parking  
Enforcement**



**Development  
Management**



**Flood Water  
Management**



**Highway Asset  
Management**



**Highway  
Structures**



**Highways  
Records and  
Searches**



**Street  
Lighting**



**Street works  
and Temporary  
Activity**



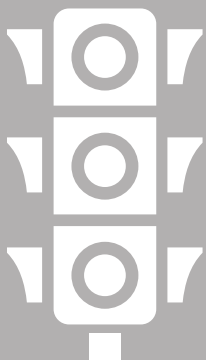
**Term  
Maintenance**



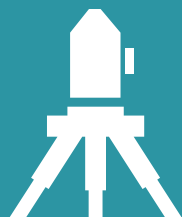
**Third Party  
Claims**



**Traffic Signals**



**Traffic  
Engineering**



**Transportation  
Data and  
Analysis**



**Winter  
Services**



# Medium Schemes Frameworks: Delivering Significant Savings and Collaborative Excellence

**Our members are at the heart of our framework development. Our Medium Schemes Framework (MSF4) delivers significant cost savings and enhanced project delivery through early contractor involvement (ECI), with a project pipeline currently valued at over £500 million.**

The framework is designed for medium and large-scale capital highway works, typically ranging from £1 million to £100 million per scheme, and features 4 national contractors committed to our collaborative and innovation philosophy.

Both our MSF and Professional Services Partnership (PSP) strive for excellence, consistently achieving high levels of performance

satisfaction and embedding crucial social value and other benefits into every project.

Our evolving frameworks provide access to innovative solutions and deliver cost effective results. Our Medium Scheme Framework (MSF) delivers even greater savings and enable more sustainable construction projects.



**UPTO £40 MILLION  
IN SAVINGS VIA ECI**



**£500  
MILLION  
PROJECT PIPELINE**



**National  
Association  
Construction  
Frameworks**  
*By the public sector,  
For the public sector*



“

*Committed to our  
collaborative and  
innovation philosophy*

”



Northampton North West Relief  
Road, with West Northamptonshire  
Council, Balfour Beatty, WSP.



# Professional Services Partnership: Accessing Top-Tier Expertise

**The MHA+ Professional Services Partnership (PSP) provides our member authorities with easy and economical access to a comprehensive range of consultancy services. This framework, developed with the needs and aspirations of our members in mind, ensures competitive tendered rates by aggregating the work of all member authorities, generating an annual turnover of around £18 million.**

Our PSP offers two distinct lots, allowing member authorities to commission all aspects of professional services from our trusted suppliers, Amey Consulting, AECOM and WSP, or to second in highly skilled staff from Waterman Aspen or Matchtech. Beyond individual project support,

the framework also facilitates vital collaborative working groups initiatives, such as our ongoing work on Climate Change adaptation and low temperature asphalt, ensuring we stay at the forefront of industry innovation and maintain high satisfaction levels.



## LOT 1

Consultancy Services

Amey Consulting

AECOM WSP



## LOT 2

Temporary and Seconded Professional Staff

waterman  
aspen

MATCHTECH

“

*Provides our member  
authorities with easy and  
economical access to a  
comprehensive range of  
consultancy services*

”

Spalding Western Relief Road,  
Lincolnshire County Council  
with WSP



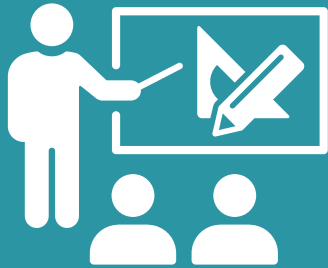
# Develop Your Expertise: Continuous Learning and Development with MHA+

**MHA+ provides comprehensive learning, development and skills opportunities through our intuitive Learning Management System (LMS) and secure Information Sharing Platform (ISP).**



---

**Your membership grants you invaluable access to:**



## Technical Skills

Participate in targeted workshops designed to enhance technical skills in areas such as design and delivery.

---

## Expert Webinars

Access a growing library of webinars from our Professional Services Framework (PSF) suppliers and other industry experts, available via our website and YouTube platform.



---

## Targeted Technical Development

Our Learning Management System (LMS) delivers focused workshops and training to enhance your team's skills.



---

## Secure Documentation:

Our Information Sharing Platform (ISP) benefits from secure access to a wealth of reference documents, benchmarking data, and presentations from leading organisations like National Highways, DfT and NHT, and our Framework suppliers.



---

## Collaborative Learning

Engage with online discussion boards for each Service Improvement Group (SIG) area, fostering a dynamic environment for shared learning and problem-solving.

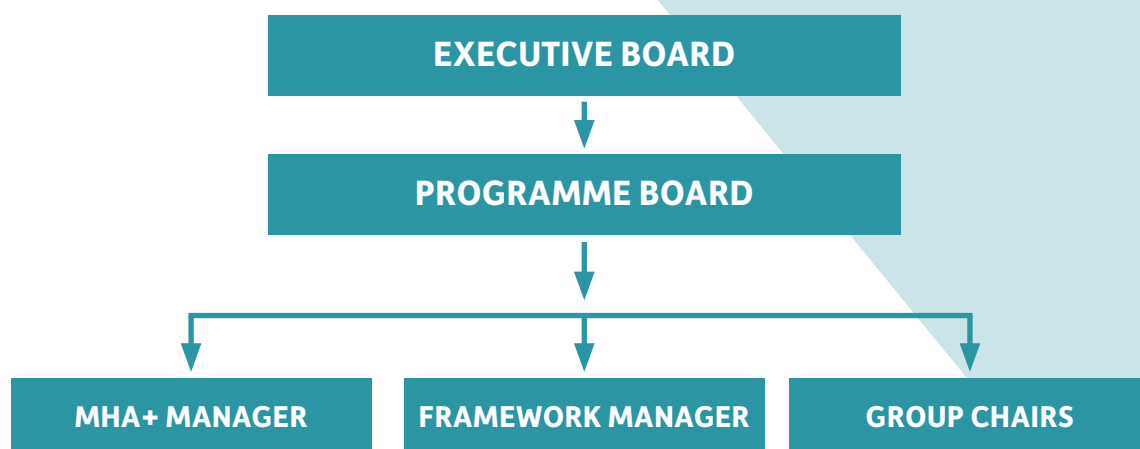
# Transparent Governance: Driving Our Collective Success

**The success of MHA+ is built on the active contribution of all our members. Our overall strategic direction is guided by a director-level Executive Board, which meets twice a year to review and approve the MHA+ business plan. Each member authority has a representative on this board, ensuring every voice is heard.**

The MHA+ Programme Board meets quarterly, providing essential oversight, context, and delivery of the business plan, alongside rigorous budget monitoring.

Our dedicated MHA+ Manager, Karen Notman, expertly drives day-to-day operations and business plan delivery, while our Framework Manager, Lucy Cox, meticulously manages our frameworks and fosters strong partner engagement.

The Service Improvement Groups and Thematic Groups are independently chaired and vice-chaired by our members, ensuring their relevance and responsiveness. Member participation is truly key to our success.





Ready to Connect?

---

# Join Our Growing Community

**Ready to learn more about how MHA+ can benefit your organisation?  
We invite you to connect with us!**

**Speak to a member of our dedicated team.**

**Email us:**

MidlandsHighwayAlliancePlus@leics.gov.uk

**Visit our website:**

[www.mhaplus.org.uk/](http://www.mhaplus.org.uk/)

 @midlands-highway-alliance-plus

---

## Host authority

Leicestershire County Council serves as the host authority for MHA+, providing essential corporate service support across vital areas such as HR and procurement. This strong foundational support enables MHA+ to focus on its core mission: empowering our members and driving excellence in local highways.

---



# For more information:

For general enquiries or to sign up to our e-bulletin email **[midlandshighwayallianceplus@leics.gov.uk](mailto:midlandshighwayallianceplus@leics.gov.uk)** or visit our website at: **[www.mhaplus.org.uk](http://www.mhaplus.org.uk)**.

## Or contact members of the MHA+ team directly:

Karen Notman, MHA+ Alliance Manager.  
**[Karen.Notman@leics.gov.uk](mailto:Karen.Notman@leics.gov.uk)**

Lucy Cox, Medium Schemes and Professional Services Framework Manager.  
**[Lucy.Cox@leics.gov.uk](mailto:Lucy.Cox@leics.gov.uk)**

Ian Bamforth, Projects and Networking  
**[Ian.Bamforth@leics.gov.uk](mailto:Ian.Bamforth@leics.gov.uk)**

Julia May, Skills and Development  
**[Julia.May@leics.gov.uk](mailto:Julia.May@leics.gov.uk)**

Tina Langton, Performance and Finance  
**[Tina.Langton@leics.gov.uk](mailto:Tina.Langton@leics.gov.uk)**

Kay Smith, Service Improvement Groups  
**[Kay.A.Smith@leics.gov.uk](mailto:Kay.A.Smith@leics.gov.uk)**

Victoria Barker, Executive Support  
**[Victoria.Barker@leics.gov.uk](mailto:Victoria.Barker@leics.gov.uk)**

Sam Rossell, Finance Support  
**[Sam.Rossell@leics.gov.uk](mailto:Sam.Rossell@leics.gov.uk)**

Nick Walkland, Communications  
**[Nick.Walkland@leics.gov.uk](mailto:Nick.Walkland@leics.gov.uk)**



Front cover image  
Melton Mowbray Distributor Road, with Leicestershire County Council, Galliford Try, AECOM, Waterman Aspen.

MHA+ JANUARY 2026