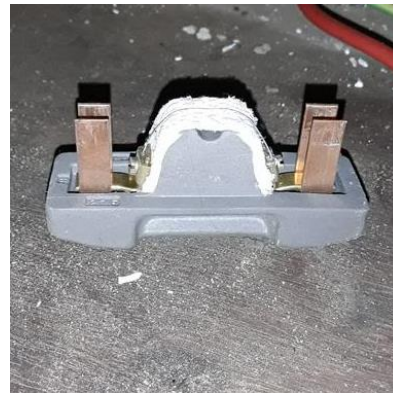


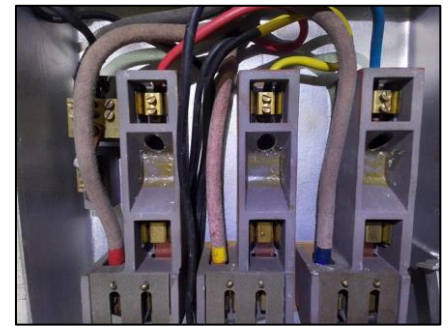


## Asbestos



### Asbestos

The images in this safety alert are examples of, or locations where, asbestos may be found in electrical, including highway electrical, equipment. Locations include old pillars, cabinets and pole cut-out housings (2<sup>nd</sup> image from the left above), including sealing bead around the access door; porcelain rewirable fuse carriers or housings, around the fuse wire to quench the arc; and in very old luminaires, such as asbestos-covered conductors between the lamp holder and connector block. Asbestos is covered by the Control of Asbestos Regulations 2012. Asbestos fibres can cause fatal lung disease and lung cancer. Asbestos isn't always obvious. There are three 'colours' of asbestos, but you can't tell just by the colour what you have found; it could be mixed with other materials which change its appearance. **If during your work you discover materials which you believe to be asbestos stop work immediately.** Secure the equipment and ensure nobody accesses it. **Report the problem to whoever is in charge** and they must arrange to have a sample of the material analysed, or alternatively, they could presume that the material contains the worst type of asbestos and apply the appropriate controls, using a licensed contractor if required. (If the item is tested and is proved to not contain asbestos, then work can continue.)



For more information, see [A comprehensive guide to managing asbestos in premises - HSE](#) and in particular the information and decision flow chart at <https://www.hse.gov.uk/pubns/guidance/em1.pdf>. There is also similar information at <https://electrical.theiet.org/wiring-matters/years/2020/81-july-2020/asbestos-guidance-for-electricians/>

- ✓ **Recommended Actions:**  
**If during your work you discover materials which you believe to be asbestos stop work immediately.**
- ✓ **Secure the equipment and ensure nobody accesses it.**
- ✓ **Report the problem to whoever is in charge**