



Midlands Highway Alliance Plus
MHA, MSIG, WMHA: Moving Forwards Together

Journey to Net Zero

Value and Skills

Wednesday 20 September 2023

Paul Binks, Highways Asset Manager,
Lancashire County Council

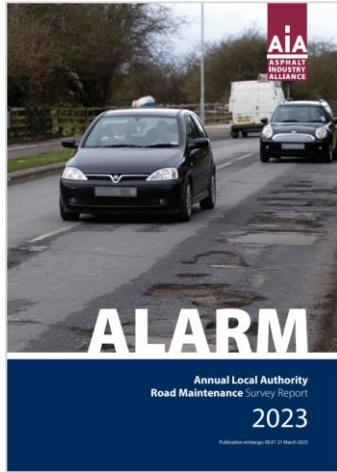


Where are we as a sector?



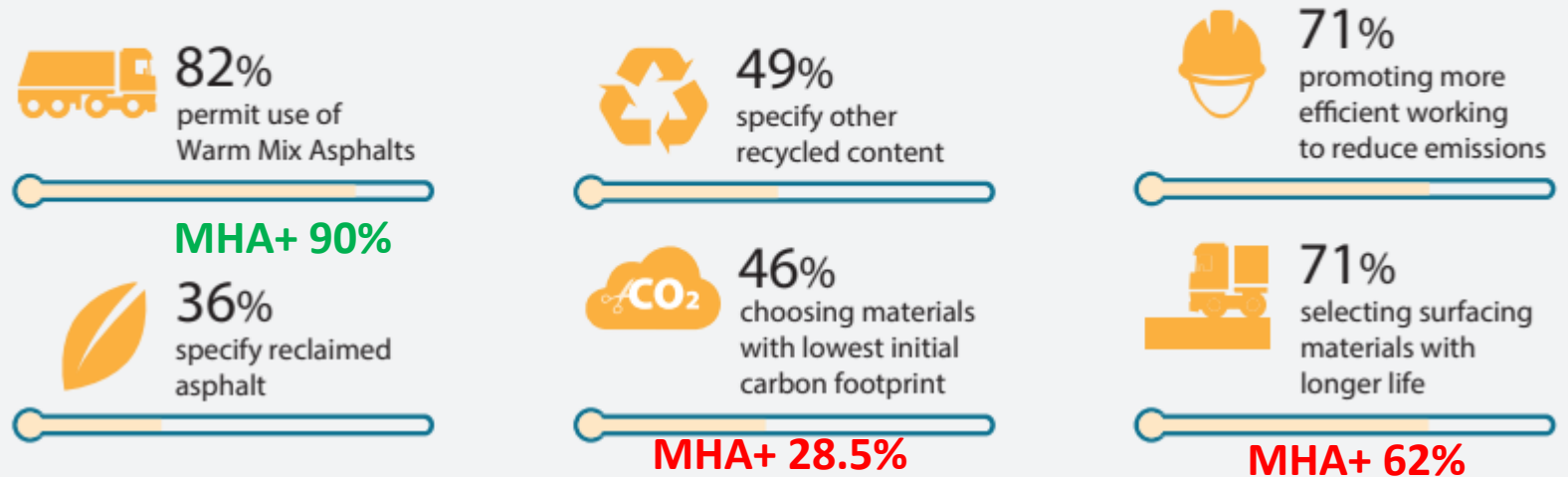
Midlands Highway Alliance Plus

MHA, MSIG, WMHA: Moving Forwards Together



Materials innovation

Percentage of responding local authorities in England and Wales reporting steps to reduce their carbon footprint including, or combinations of:



Page 20: (last page!)

- 80% LAs declared 'Climate emergency'
- 60% pledging 'Net' Zero by 2030
- 10% confirmed quantified carbon reduction target for 'procurement of road surfacing materials'. MHA+ **5%**.

Overall ALARM 2023 response rate 75% (England: 81%)
Response rate for MHA+ **65%**

Value and Skills

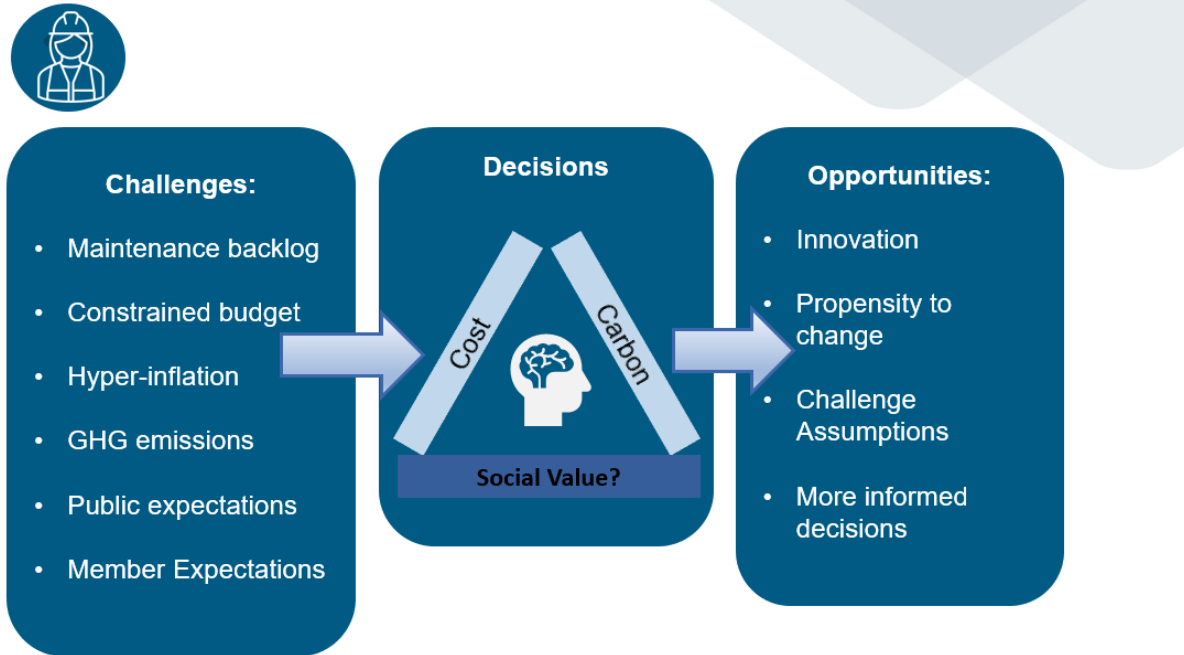
Wednesday 20 September 2023



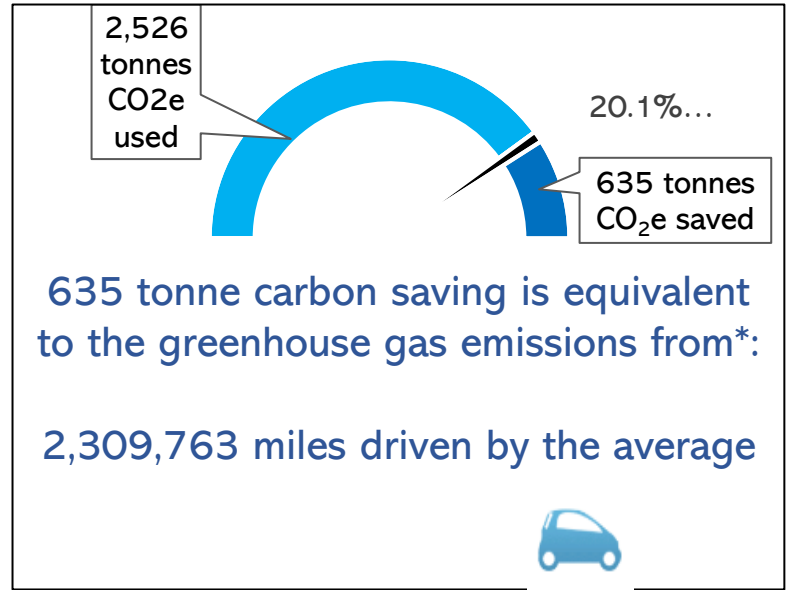
How far as a sector could we go?
Propensity to Change

What is our willingness to adopt 'new' technologies if we could?
Willingness to change

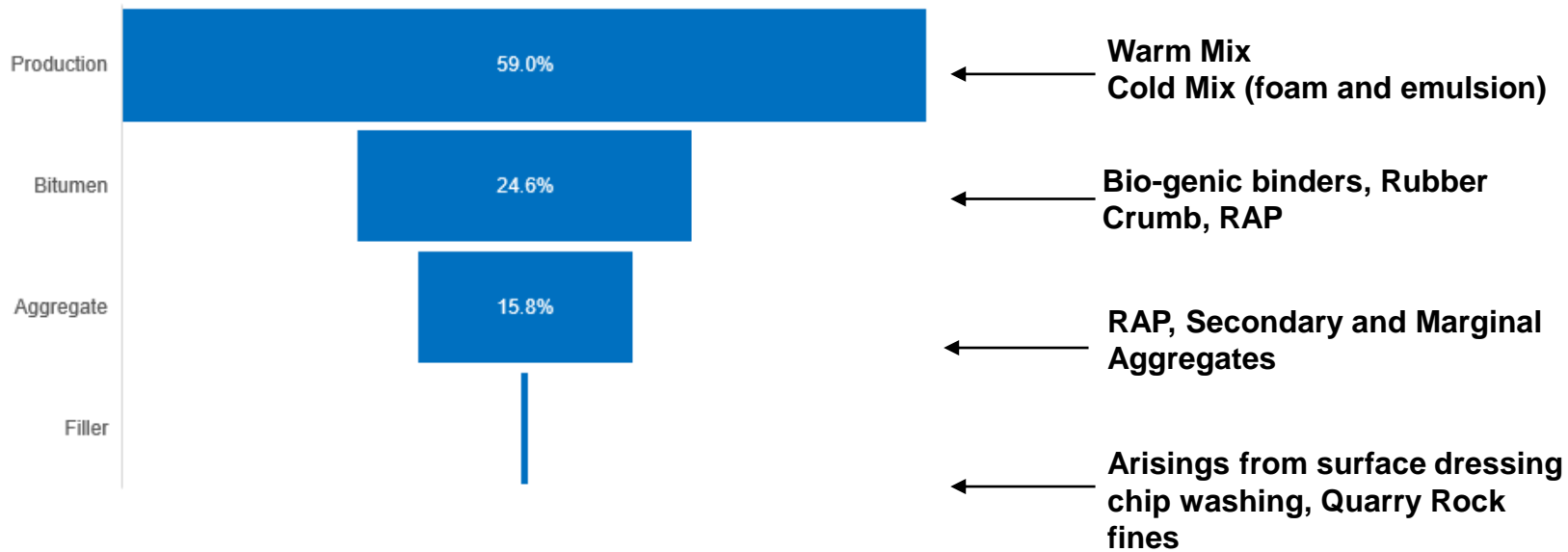
How far will our current 'resources' let us go?
Ability to Change



How far as a sector could we go?
Propensity to Change

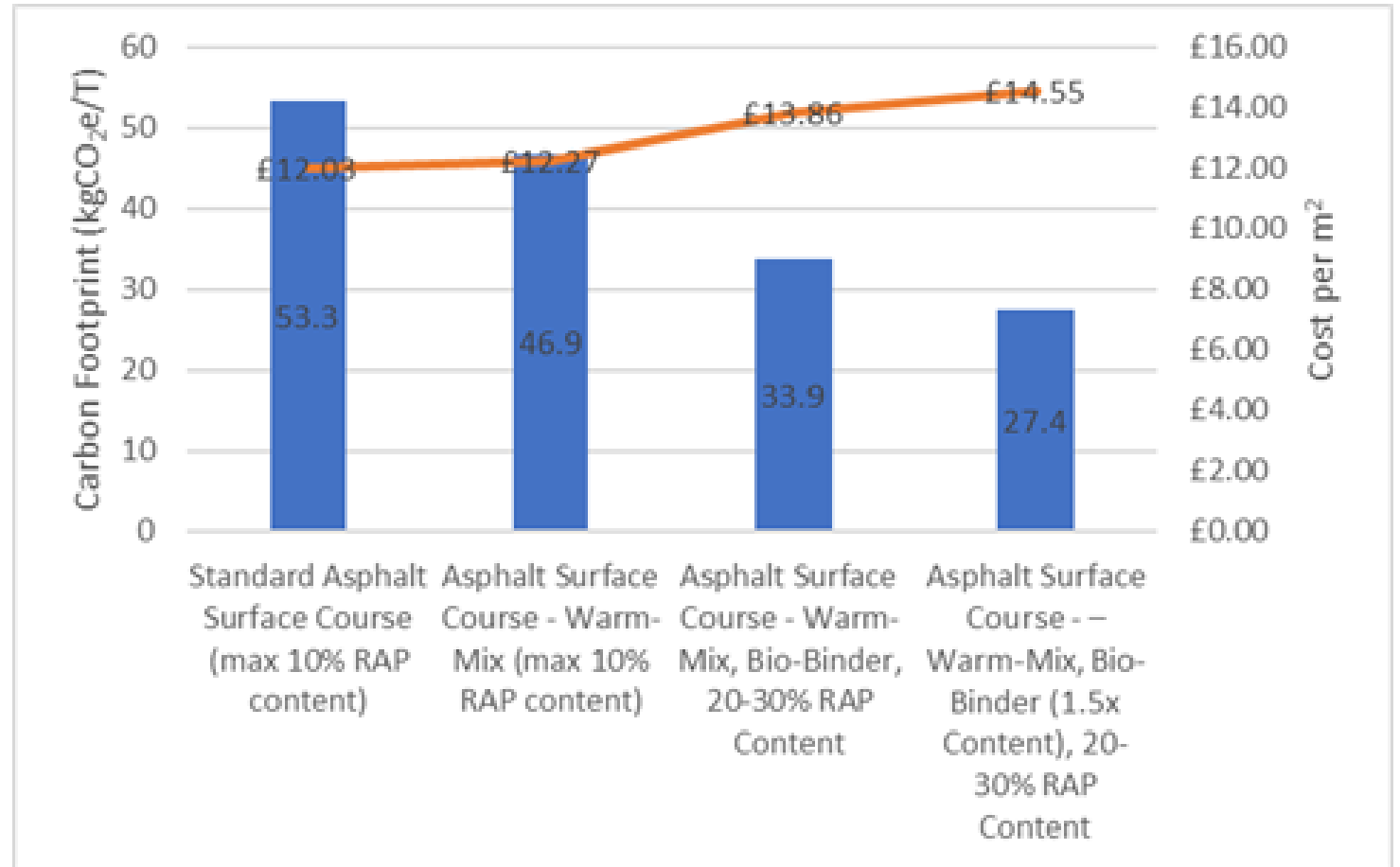


Typical contributions to the carbon footprint of asphalt



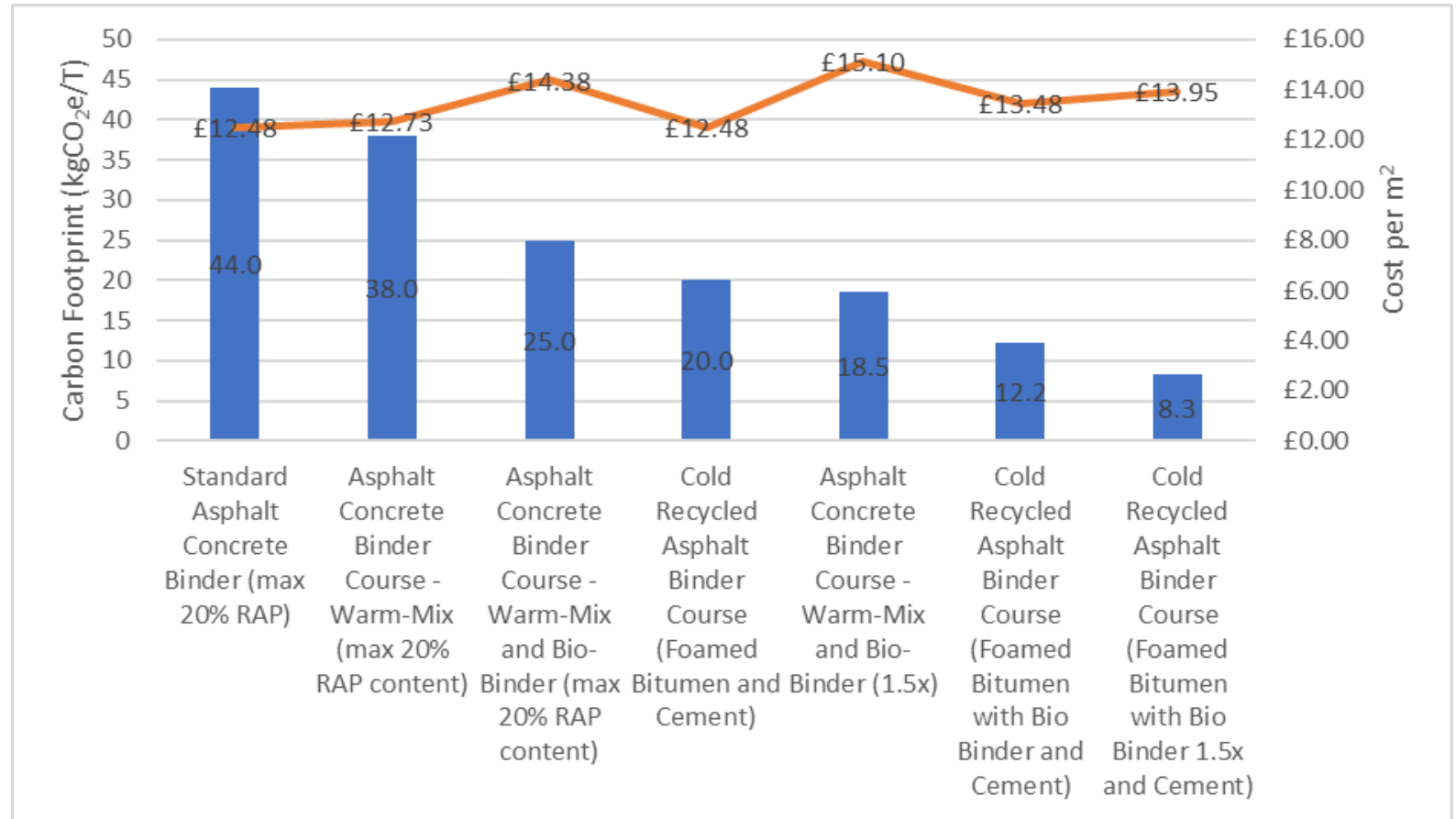
Quantification of potential carbon savings

Surface courses:

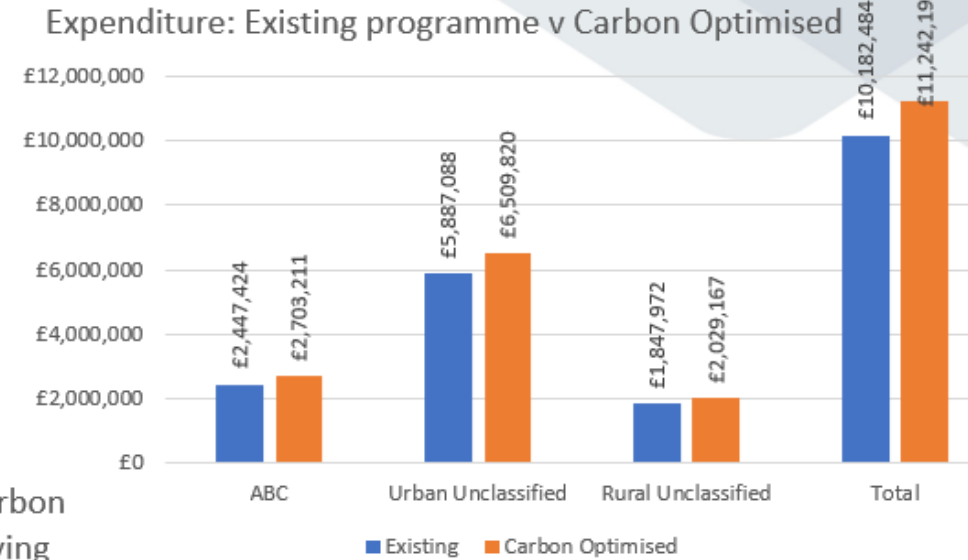


Quantification of potential carbon savings

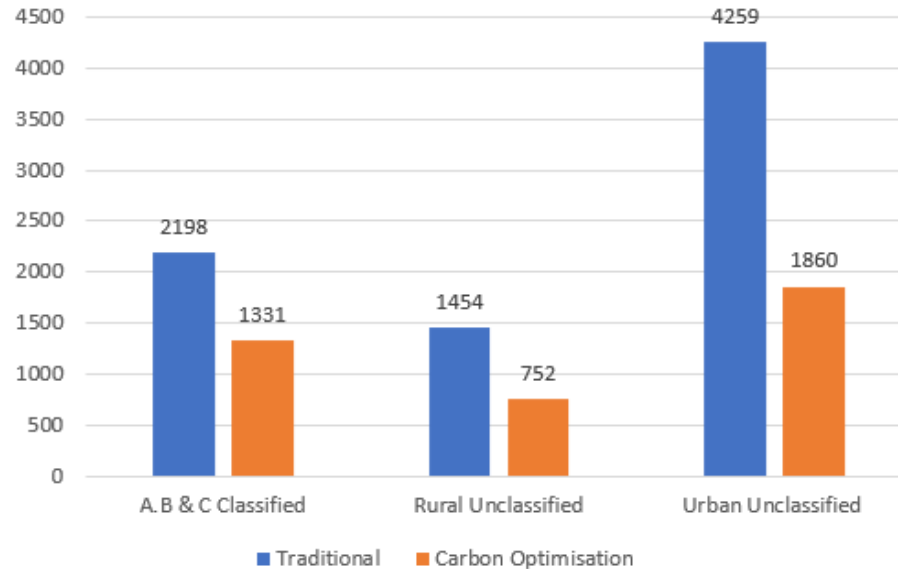
Binder and Base Courses



What does this mean for the Capital Programme Delivery?



TAMP Ph2 Funding: Existing Programme v Carbon Optimised: Tonnes CO₂e: possible 50.2% Saving



50% saving in CO₂e:
 To deliver same number of schemes requires additional £1.1m :
 £10.2m Traditional
 V
 £11.3m Carbon Optimised



8. What do you think are your local authority's inhibitors to adopting lower carbon asphalt products? (Please tick all that apply):

- Not included in our existing delivery agreements: **32.2% (ALARM: 28.9%)**
- Cost: **52.9% (ALARM: 59.6%)**
- Availability: **70.5% (ALARM: 51%)**
- Lack of long-term performance data: **94.5% (ALARM: 74%)**
- Previous or ongoing requirement for departures: **5.8% (ALARM: 5.8%)**
- Other: **5.8% (ALARM: 11.5%)**. Please specify:
- **Workability of warm asphalt around ironworks in small areas.**





Midlands Highway Alliance Plus
MHA, MSIG, WMHA: Moving Forwards Together



How far will our current
'resources' let us go?

Ability to Change

- **Skills?**
- **Knowledge?**
- **Funding?**
- **Political reality?**
- **Contracts\ Framework?**
- **Procurement?**
- **Culture?**

What is our willingness to adopt
'new' technologies if we could?

Willingness to change

- **Faith in the product\ process?**
- **Knowledge?**
- **Ability to estimate impact?**
- **Prior experience/Culture?**



Workshop 5: Achieving value through Carbon reduction

Workshop discussion:



What is our willingness to adopt 'new' technologies if we could?
Willingness to change
The 'you'

Thinking about yourself and what you would need to be confident to adopt a lower carbon approach.

What would need to feel or have:

- **Faith in the product ?**
- **Faith in the process ?**
- **Improved product\ process knowledge?**
- **Ability to estimate impact of the processes & products?**
- **Feel like you have the support of those around you?**
- **Like minded people to talk to?**



**How far will our current 'resources' let us
go?**

***Ability to Change
The 'organisation'***

Thinking about the Local Authority context in which you work. What does the Authority need to have in order to change towards lower carbon approach:

- **Skills?**
- **Knowledge?**
- **Funding?**
- **Political reality check?**
- **Contracts\ Framework?**
- **Procurement?**
- **Understanding of what difference could be made?**
- **A drive to change?**



Panel Discussion: Q&A

