

# SAFETY ALERT

February 2016  
Ref 005 16

## Ringway Shropshire Fall from Wash down Gantry Incident

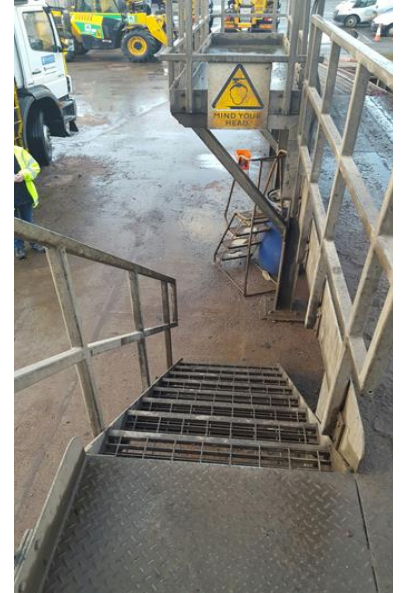
**Date:** 03 February 2016

**Time:** 07:00hrs

**Division:** Ringway Shropshire

**Location:** Longden Road, Shrewsbury

An Operative was carrying out winter gritting operations and had returned to the depot to wash the vehicle. Whilst walking down the gantry steps the operative slipped, resulting in injuries to his head and back. The operative was taken to A&E for assessment and was released within a few hours. He was signed off from work later that week by his doctor resulting in an over 7 days RIDDOR reportable incident. A full incident investigation is underway to identify the root causes, corrective and preventative actions.



### Recommendations

- Ensure workforce have been briefed on Winter Maintenance washdown Risk Assessment (5J)
- Ensure Vehicle washdown gantry's are well lit, free of ice and well maintained.



It is vitally important that we maintain safe access and egress to any location where we expect people to work. It's also important that everyone using these areas are briefed on the requirement for maintaining three points of contact.

*DP Campbell*

**David Campbell**

Group Health, Safety &  
Environment Director  
Eurovia UK Ltd